



Manual

PLEASE READ CAREFULLY

SemenMar

(Seminal IgA and IgG test)



Distribution:

GYNEMED

Professional Use Only

Application

"Immunological Infertility" describes the absence of a concept as a result of an impaired immune system of the reproductive organs. The vast majority of these disorders are based on the presence of anti-sperm antibodies (ASA) that can occur in both genders.

Immunoglobulins (antibodies) are considered as defense mechanisms of the body against foreign objects or substances. When the body detects a "foreign" substance, it tries to build an immunity using antibodies against the substance. However, in the case of anti-sperm antibodies, the body recognizes the sperm as foreign, it then builds antibodies against it and affects the reproductive process. The antibodies build by the defense system of a woman inhibit the sperm to enter through the cervical mucus and to reach the egg. In men, antibodies which bind to the spermatozoa impede the passage of sperm through the cervical mucus. Causes for the development of these antibodies may be infections and / or injury to the genital tract or an autoimmune disease.

Ursachen für die Entwicklung dieser Antikörper sind möglicherweise Infektionen und /oder Verletzung im Genitaltrakt, oder eine autoimmune Erkrankung.

Sperm antibodies in the ejaculate belong almost to the IgA and / or IgG classes. Data suggest that IgA antibodies are more clinically significant than IgG antibodies, but rarely occur alone. The antibody in ASA of serum is predominantly IgG, but in ASA of the ejaculate or cervical mucus it is IgA.

Principle

For screening tests combined anti-Ig beads can be used which are able to detect all Ig types. By using the immune beads tests (IBT) different types of antibodies against sperm can be detected in different biological samples, like blood, cervical mucus and sperm. The test may indicate the presence of antibodies and the severity of antibody formation, as well as which part of the sperm cells specifically is affected.

The type of ASA has an influence on the function of spermatozoa only when complement fixing antibodies are present. A survey of reproductive medical centers in the UK showed (Krapež et al., 1998) that the MAR test ("*mixed antiglobulin reaction test*") or the IBT ("*immuno bead test*") was used. Both tests are easy to perform. They work with beads which are coated with anti-

immunoglobulins and bound on the surface of the spermatozoa attached by ASA.

The WHO referred the MAR test as compulsory screening test. The *in vitro* detection of antigens or antibodies is only possible when the antigen-antibody reaction is made visible or measurable. The selection of the detection technique is dependent on the properties of the antigen (size, number and structure of the antigenic determinants), the properties of the corresponding antibody (avidity and specificity) and the concentration of the analyte to be determined. Antigen or antibodies are principally determined by the following techniques:

- Direct readout
- Indirect readout
- Proof due to the marking of a reactant.

For the determination of IgA and IgG antibodies against spermatozoa in this test direct evidence can be used with yellow microspheres.

Storage and stability



Store at 2-8°C. Do **not** freeze



18 months from date of manufacture

Content

1 bottle containing 300 µl latex particles (3 µm diameter) coated with spec. Anti-IgA and Anti-IgG.

Note: preserved with sodium azide (final concentration 0.09%).

Necessary utensils (not included)

- Cover slips (18 x 18 mm)
- Moist chamber
- Gloves
- Light microscope, 400x-600x magnification
- Ejaculate (10 µl)
- Slides
- Paper towels
- Pipettes and tips (0.5-10 µl)

Procedure (see also scheme below)

Performing the direct testing of the IgA and IgG class in human spermatozoa.

1. Warm up semen sample and reagents to room temperature. Use only native ejaculate.
2. Pipette 3.5 µl fresh ejaculate and 3.5 µl latex particles on a glass slide (mix latex particles before).
3. Mix with the tips of the pipette 5x the semen sample with the latex particles.
4. Place a cover slip on the mixture and incubate in moist chamber.
5. Evaluate after 3 minutes the mixture. Examine the sample under at light microscope at 400x-600x magnification. It may be beneficial to evaluate the slide under phase contrast or dark field. If positive, the latex particles are adhered on the motile sperm. This reaction between the sperm and the latex particles indicates that antibodies are present. Count 100 sperms to determine the percentage of IgA and IgG-positive sperm. Count again after 10 minutes.

Keep the slides while waiting in a humid environment (e.g. in a culture dish containing moist filter paper).

Evaluation:

A suspected immunological infertility is when 10-39% of motile sperm have adhering latex particles. If 40% or more of the sperm have adhesive latex particles, an immunological infertility is very likely.

The direct IgA and IgG test can be carried out only with motile sperm. Semen samples with very low sperm concentration or a small number of motile sperm can lead to erroneous results. It is therefore recommended to count a larger number.

Important note:

The decision to an ART therapy should not be primarily the result of the IgA-dependent test, but could value as an additional factor beside the number of sperms, sperm motility, sperm morphology and other traits are valued.

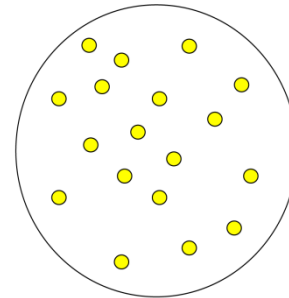
Safety information / precautions

(Please read also the safety data sheets)

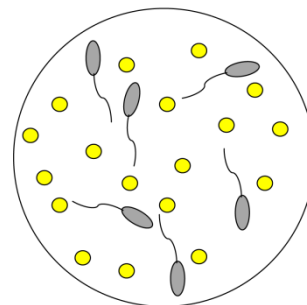
- All semen samples should be considered potentially infectious. Handle with all samples like HIV or hepatitis infected material.
- When working with samples and reagents wear always protective clothing (gloves, gowns, eye / face protection).
- SemenIgA contains 0.1% bovine serum albumin.
- Sample Slides with samples and remaining sample should be inactivated after evaluation and then discarded.

Scheme of the procedure of the seminal IgA and IgG test

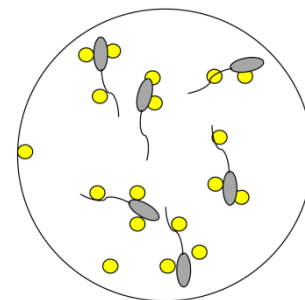
3,5 µl (IgG, IgA-Latex particles)



3,5 µl fresh, native sperms








Mix 5x latex particles with 3,5µl fresh native sperm



- **Safety information / precautions**
- (Please read also the safety data sheets)
- All semen samples should be considered potentially infectious. Handle with all samples like HIV or hepatitis infected material.
- When working with samples and reagents wear always protective clothing (gloves, gowns, eye / face protection).
- SemenIgA contains 0.1% bovine serum albumin.
- Sample Slides with samples and remaining sample should be inactivated after evaluation and then discarded.

References

1. Ackerman S, Mc Guire G, Fulgham DL and Alexander N (1988). An evaluation of a commercially available assay for the detection of antisperm antibodies. *Fertil Steril.*,49:732-734
2. Boettcher B, Hjort T, Rumke PH, Shulman S and Vyazov OE (eds) (1977). Auto and isoantibodies to antigens of the human reproductive system. 1. Results of an international comparative study of antibodies to spermatozoa and other antigens detected in sera from infertile patients deposited in the WHO Reference bank for reproductive immunology.
3. Comhaire FH and Kunnen M (1985). Factors affecting the probability of conception after treatment of subfertile men with varicocele by transcatheter embolisation with Bucrylate. *Fertil Steril.*,43:781-786
4. Comhaire FH, Hinting A, Vermeulen L, Schoonjans F and Goethals I (1987). Evaluation of the direct and indirect mixed antiglobuline reaction with latex particles for the diagnosis of immunological infertility. *Int. J. Androl.*,11:37-44
5. Friberg J (1980). Immunoglobulin concentration in serum and seminal fluid from men with and without sperm-agglutinating antibodies. *Obstet. Gynecol.*,136:671-675
6. Golomb J, Vardinon H, Homonnai ZT, Braf Z and Yust I (1986). Demonstration of antispermatozoal antibodies in varicocele-related infertility with an enzymelinked Immunosorbent assay (ELISA). *Fertil Steril.*,45: 397-402
7. Jager S, Kremer J and Van Slochteren-Draaisma T (1987). A simple method of screening for antisperm antibodies in the human male. Detection of spermatozoal surface IgG with the direct mixed antiglobulin reaction carried out on untreated fresh human semen. *Int. J. Fertil.*,23:12-21
8. Jager S, Kremer J, Kuiken J and Van Slochteren-Draaisma T (1980). Immunoglobulin class of antispermatozoal antibodies from infertile men and inhibition of *in vitro* sperm penetration into cervical mucus, *Int J Androl.*,3:1-14
9. Kay DJ and Boettcher B (1992). Comparison of the SpermMar test with currently accepted procedures for detecting human sperm antibodies. *Reprod. Fer. Dev.*,4:175-181
10. Krapez JA, Hayden CJ, Rutherford AJ, Balen AH (1998). Survey of the diagnosis and management of antisperm antibodies. *Hum. Reprod.*,13:3363-3367
11. Krause, Walter (2011) in: *Andrologie, Krankheiten der männlichen Geschlechtsorganen*, 4. Auflage, Georg Thieme Verlag:205-210
12. Kremer J and Jager S (1992). The significance of antisperm antibodies for sperm cervical mucus interaction. *Hum. Reprod.*,7:781-784
13. Rumke P (1976).The origin of immunoglobulins in semen. *Clin. Exp. Immunol.*,17:287-297
14. Santen-Swerdlhoff (1986) in: *Basic and clinical endocrinology, male reproductive dysfunction*:439-456
15. Shulman JF and Shulman S (1982). Methylprednisolone treatment of immunologic infertility in the male. *Fertil Steril.*,38:591-599
16. Stedronska J and Hendry WF (1983).The value of the mixed antiglobulin reaction (MAR-Test) as an addition to routine seminal analysis in the evaluation of the subfertile couple. *Am. J. Reprod. Immunol.*,3:89-91
17. Thomas L (2012) in: *Thomas L (8.ed) Labor und Diagnose. Bd.2. Th-Books Verlagsgesellschaft GmbH Frankfurt/Main:2227-2247*
18. Vermeulen L and Comhaire FH (1983). Le test <MAR> aux particules de Latex, et le test spermatoxique selon Suominen: simplification et nouveauté dans l'arsenal du diagnostique immunologique. *Contraception-Fertilité-Sexualité* 11 (suppl.):381-384
19. WHO Press, (2010) *Laboratory manual for the examination and processing of human semen. 5th edition*

 REF	Katalognummer
	Gebrauchsanweisung zurate ziehen
 IVD	<i>in vitro</i> Diagnostika
	Temperaturbegrenzung
 LOT	Chargencode

Distribution:

Gynemed GmbH & Co. KG
Lübecker Str. 9, 23738 Lensahn, Germany
Tel.: +49 4363-903290
Fax: +49 4363-9032919
E-Mail: info@gynemed.de
Homepage: www.gynemed.de